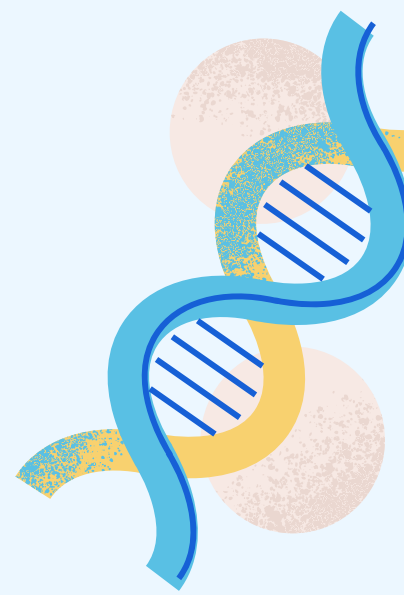
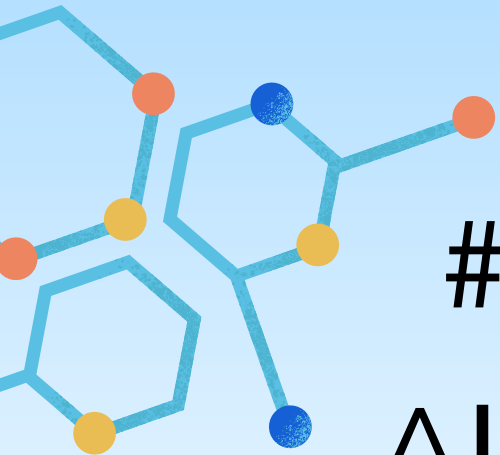
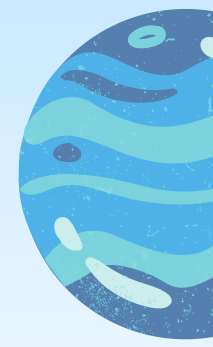


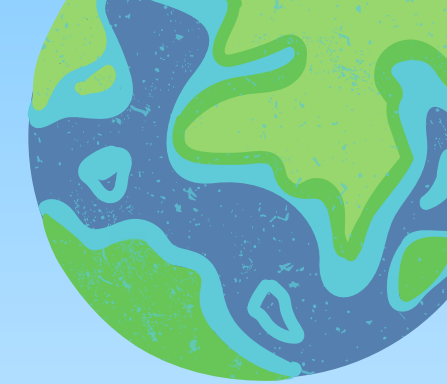
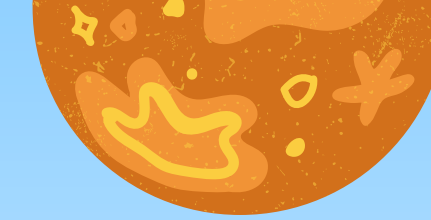
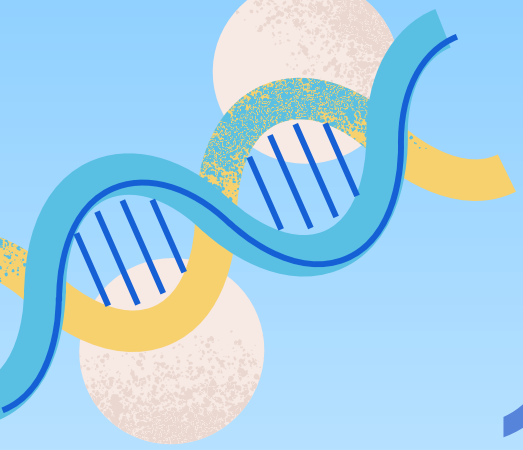
#TECO)]Mq | 8 8 Z





#TE9 0, & D]ETCO)]M d - 0 7 e) c a6f \$]# 0 *T##TE9 0
 ^L) a=7 ##ER9 <| 8 8 Z e) c ^Gf]# 0 #TEL R9 0;]\$fl e T
]ET _6 D>e;]\$flG# 7 Ta=9 j' M]# 0 BT@<; *O=ERL T9 7 T
 ME 0]E7 y T (Retina) 9 0 de ff; MG\$\$O) G# 7 T BT@9 0
 CO)]M d *RL e a=L e CO) 7 TC]L f =ERL T9 ^Gf L CO) 9 j
 #TE ^ =G\$ 0 C [GB T@\$O) | 8 8 z \$





1. LTD7 T 1

CWT]M7 ZT*T## ER< O# 7 TC\$y T6
&I TCDTI]#y #I e=# 7 VBT@*T#I 8 8 Z
' ; ERDRa# G* R7 ## @; 8X* O
=ERL T9 7 T 9 jT' MjMd BT@@EeCS
^#b\$_6 D#TE' LeI e 9 Wj6f D]G; Li
]I T]@0, eDM\$]M^L)' MG) 9 W07 T
@O6 W





2. L TD7 TDTI

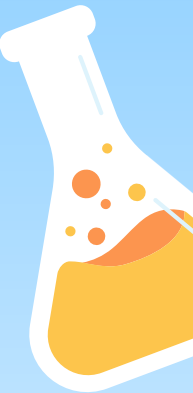
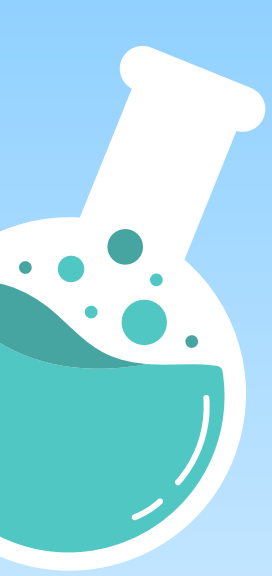


CWT]M7 ZT*T##ER<O#7T \$ #I E=#7VMEY#ER*#7TCW
 &I TC_&f; fOD]#y a= MEY#GfC]; Y07TMD@; BT@*T#
 I 8 8ZR7 #]GD*O=ERLT97T 9jT' MfMpd BT@@E@CS ^#f\$
 _6D#TE' L@I e 9 WjT6fD]G; Lj; []@Y, eDM\$]M^L)' Mf
 G) 9 W07T@O6W



3. LTD7 T] O(V)

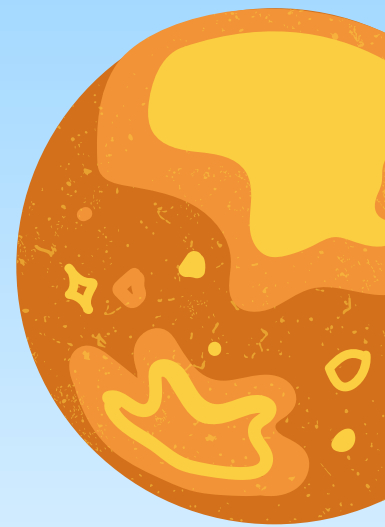
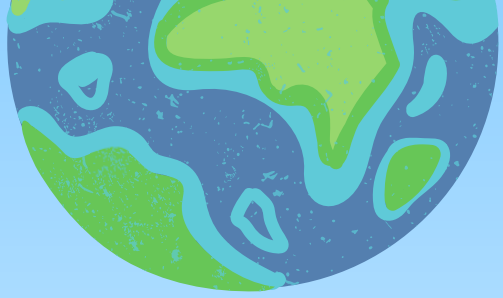
]#~~Ø~~*T##jTGS#TEEI C^L) \$O) 7 T' ; ^; I 7 ~~⊕~~) c aCe
]9 ~~⊕~~# \$]@ETR#ER*#7 TaC#GC C\$]#~~Ø~~EeC#&BTI R
 LTD7 T ¹\$ ME~~Ø~~DTI _6 D#j]; ~~Ø~~ 9 jT' MjM~~⊕~~ BT@- ~~⊕~~;
 ^#~~⊕~~\$ _6 D' , ~~⊕~~^I ~~⊕~~ LTD7 T]L; L#T<#Gf D, ; ~~Ø~~@~~⊕~~ K
]@~~⊕~~⁰ , ~~⊕~~E&#TEEI C^L) 9 ~~⊕~~W7 #7 ~~⊕~~) # \$ ' ; ERDR' #G^GR
 a#G



4. L TD7 T] MGe

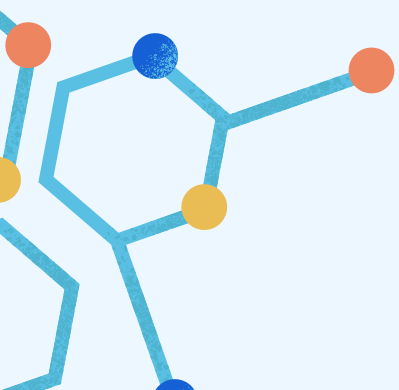
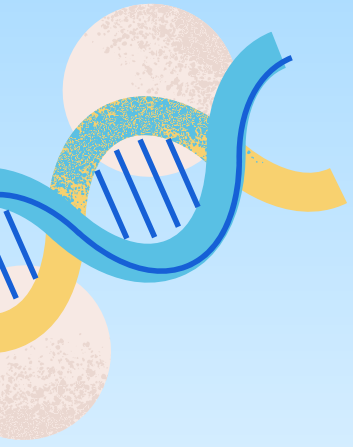
]#~~6~~*T#&I TC>~~6~~=#7 \$O) # GfTC]; ¹07 T 8ff]=q ; fOD c
 ^#~~6~~\$_6 D' , f.v\WTE? ~~X~~ <EMTE# GfTC]; ¹07 T ^7 8ff]=q
 CT# c 7 fD) ^#~~6~~\$6 f D# TE>ē7 6



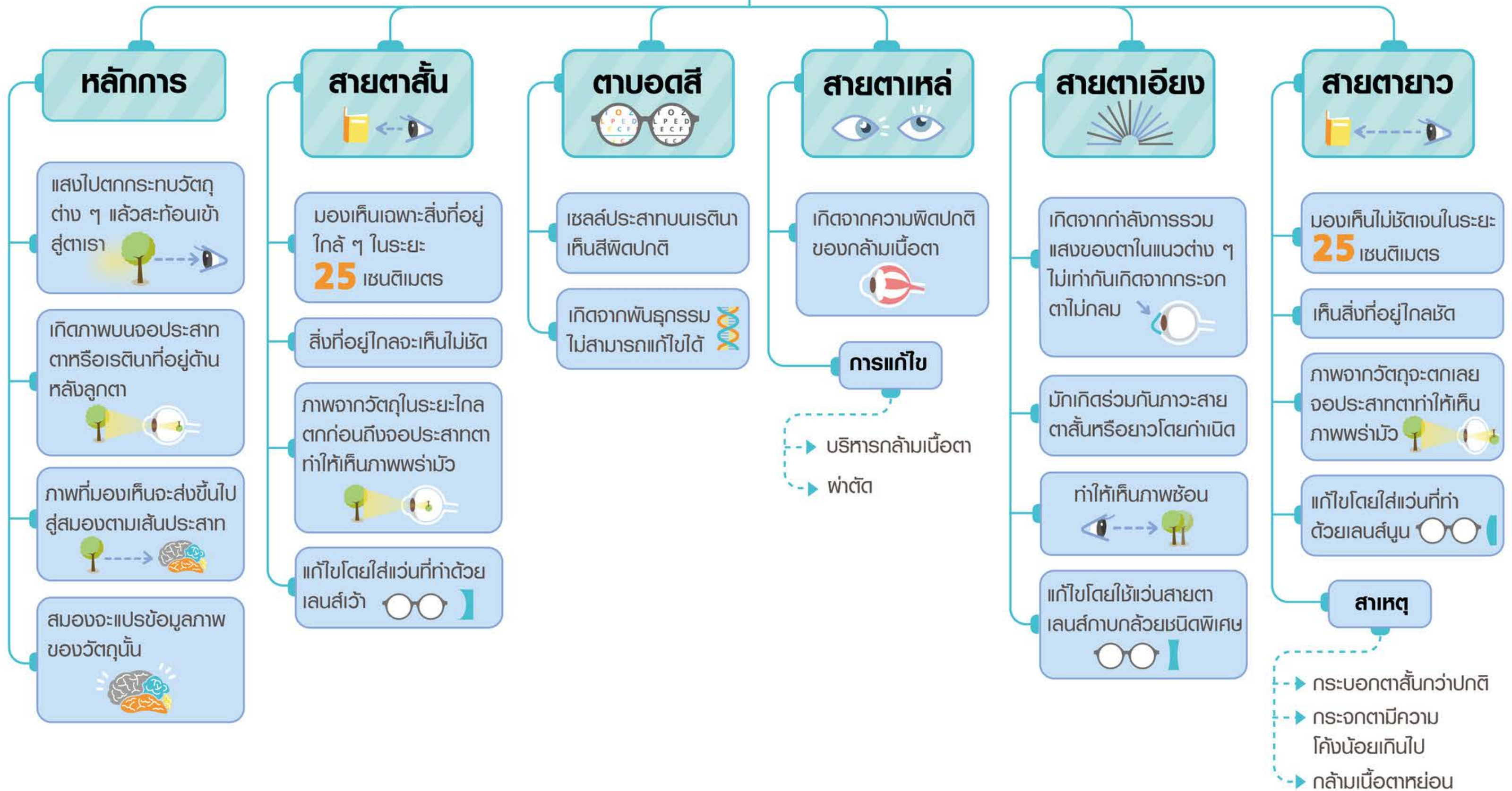


5. 7 T < 06 - W

]#~~6~~*T#&I TC>~~6~~=#7 \$O) # GfC]; ¹07 T 8ff]=d ; fOD c
 ^#f\$_6 D' , f.v#TE? * <EMTE# GfC]; ¹07 T ^7 8ff]=d
 CT# c 7 D) ^#f\$6 f D#TE>e7 6



การมองเห็นวัตถุ





TM- Φμ εὐ μ Â

