

The English Alphabet

By Kru Milk Kaewta Kraison





FINISH

Hh

Gg

Ii

Tt

Ee

Ff



Jj

Ss

Ll

Kk

Mm

Nn

Rr

Dd

Cc

Bb

Oo

Pp

Qq

Aa



Home

Back

Next



Ant

A festive background featuring a light pink wall with scattered confetti. A string of colorful bunting (yellow, pink, blue, teal) hangs across the top. On the left and right sides, there are stylized blue houses with white windows. The central focus is a large white cloud-like shape containing the text.

Find the letter

Aa



Activate Windows
Go to Settings to activate Windows.



Activate Windows
Go to Settings to activate Windows

Good job!



Home

Next

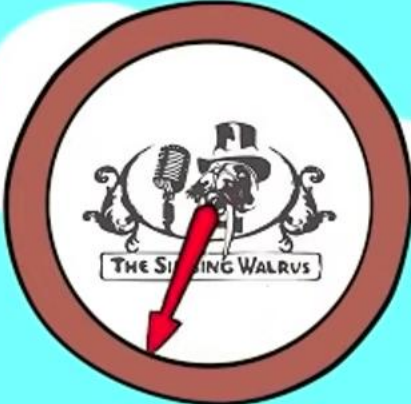
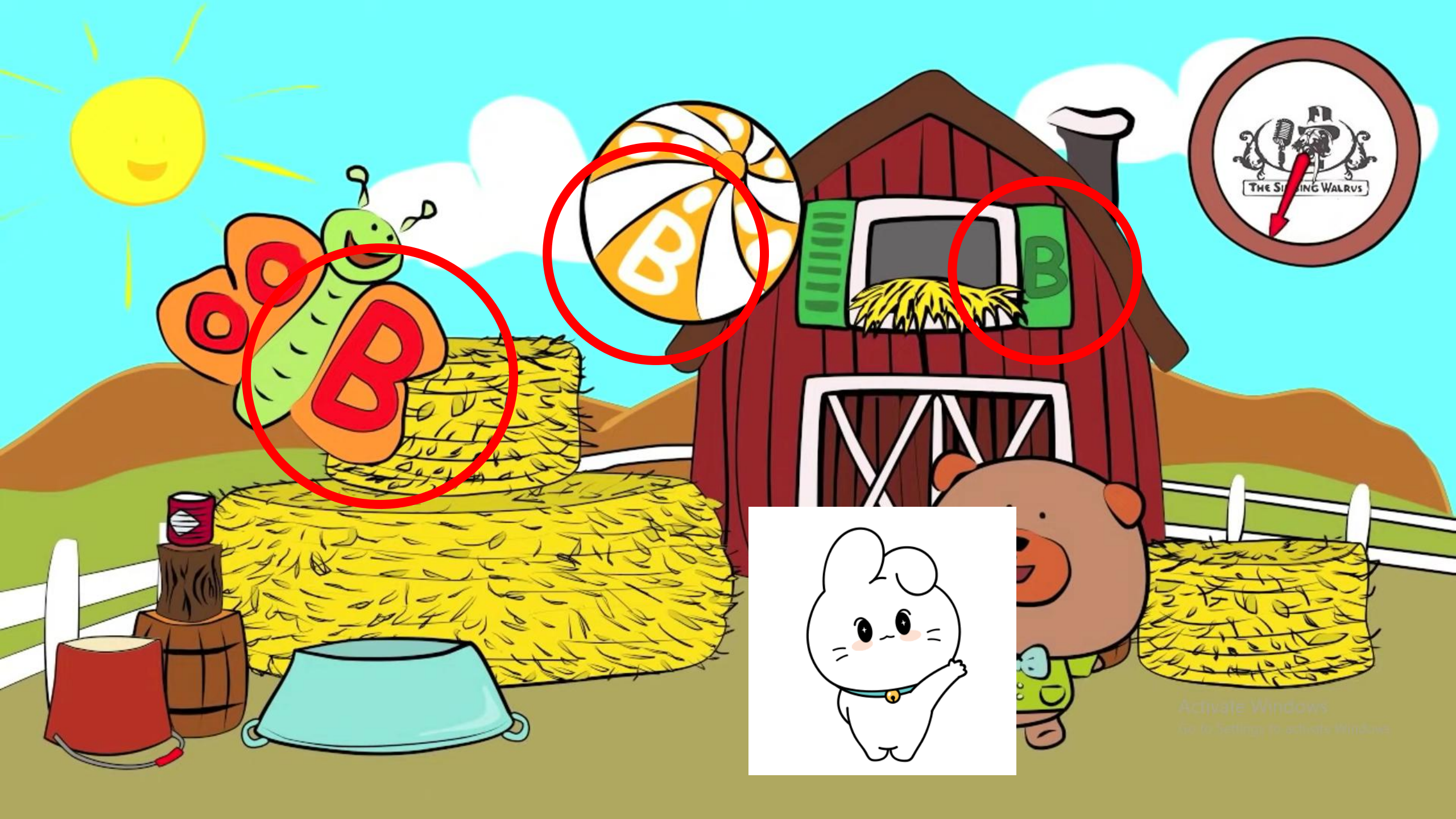


bird

The background is a light pink color with scattered, faint, light-colored rectangular shapes resembling confetti. A string of colorful bunting (yellow, pink, blue, teal) hangs across the top. On the left and right sides, there are stylized, dark blue buildings with white window cutouts. A white, cloud-like shape is centered in the background, containing the text.

Find the letter

Bb



Activate Windows
Go to Settings to activate Windows.



Great!



Home

Next



Cat

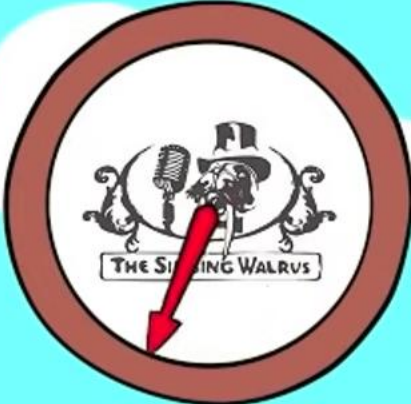
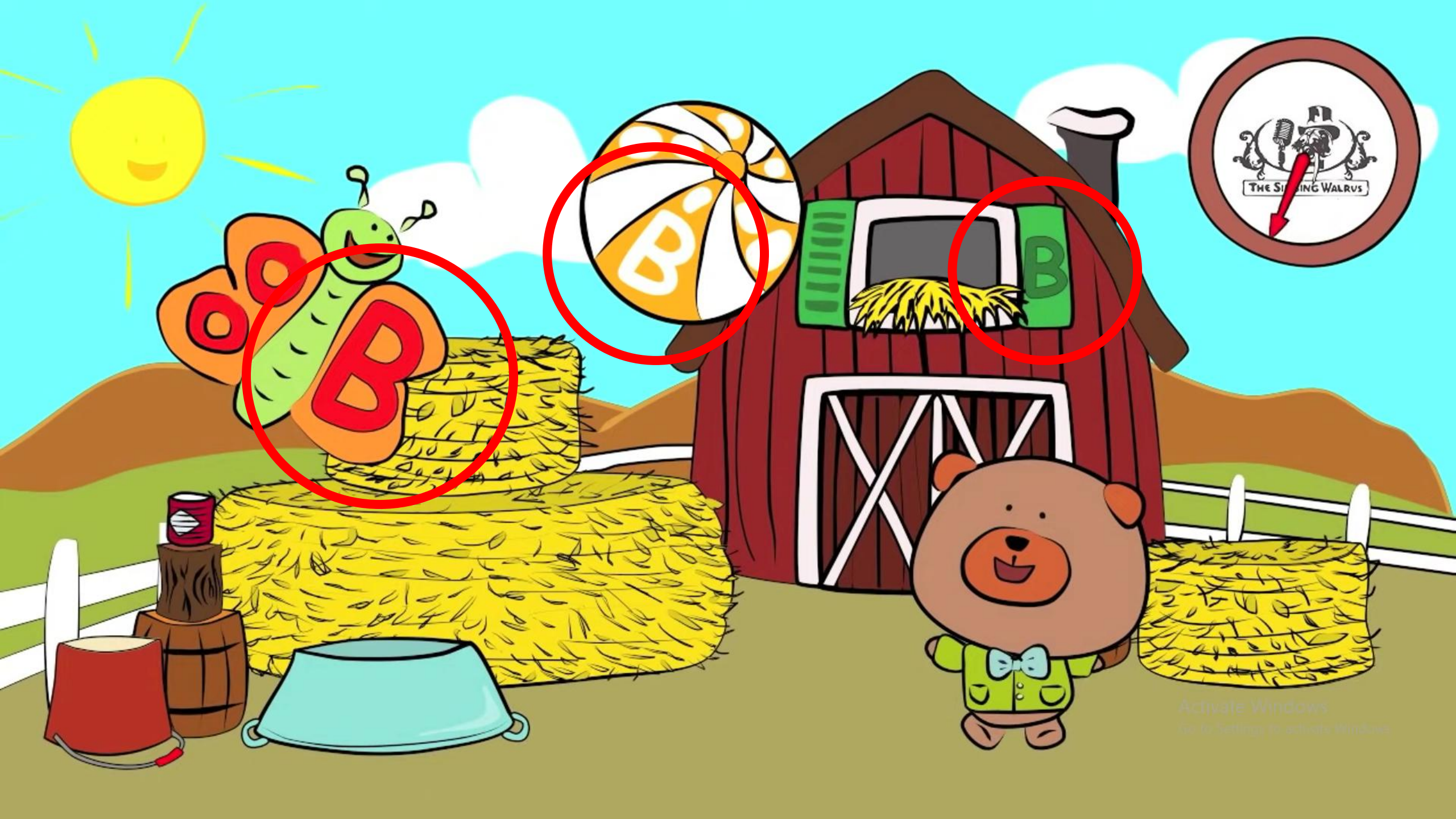
A festive background with a light pink and red color palette. It features scattered confetti, a string of colorful bunting (yellow, pink, blue, teal) at the top, and stylized dark blue trees with white window cutouts on the sides. A large white cloud-like shape is in the center.

Find the letter

Cc



Activate Windows
Go to Settings to activate Windows.



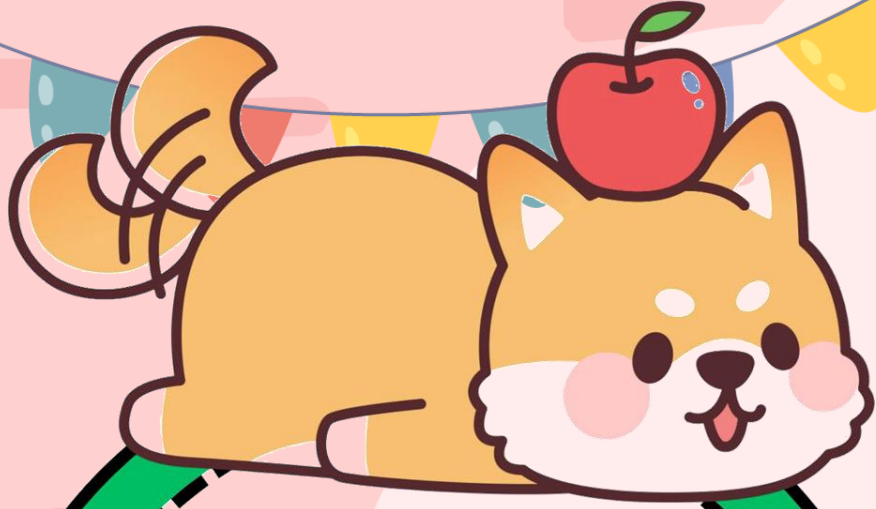
Activate Windows
Go to Settings to activate Windows.

Great!



Home

Next



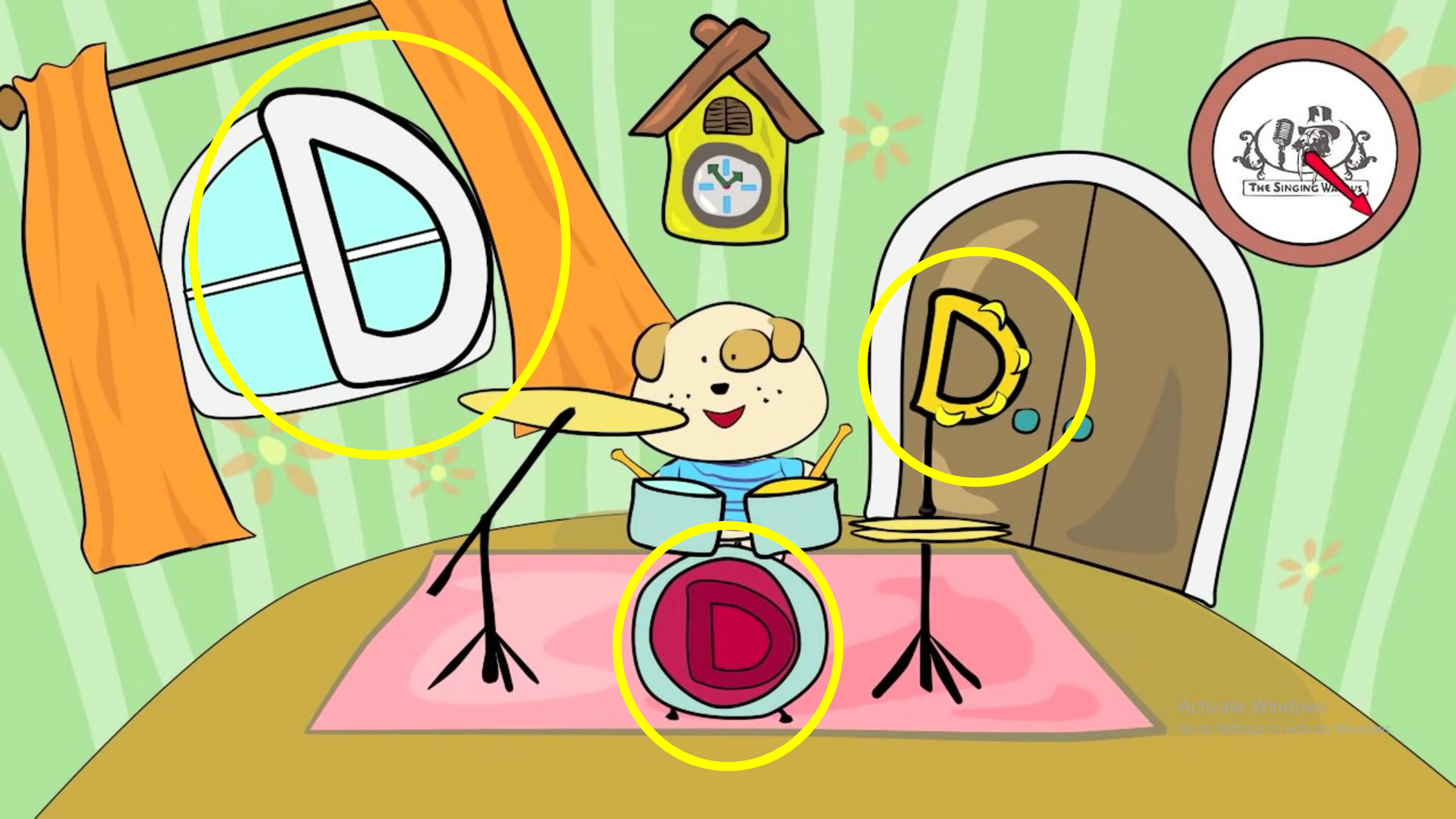
Dd

Dog

The background is a light pink color with scattered, faint, light-colored rectangular shapes resembling confetti. A string of colorful bunting (yellow, pink, blue, teal) hangs across the top. On the left and right sides, there are stylized, dark blue buildings with white window cutouts. A large, white, cloud-like shape is centered in the background, containing the text.

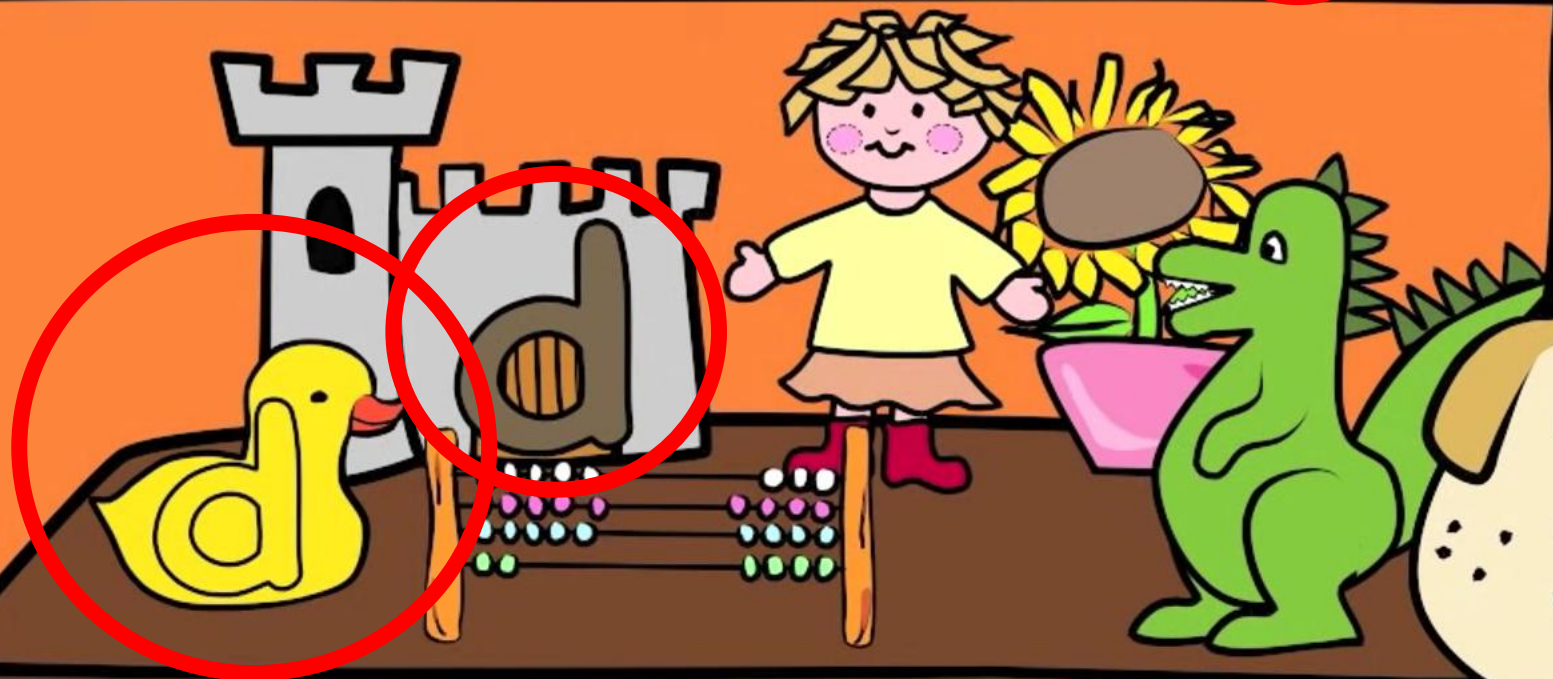
Find the letter

Dd



Activate Windows
Go to Settings to activate Windows.

TOY STORE



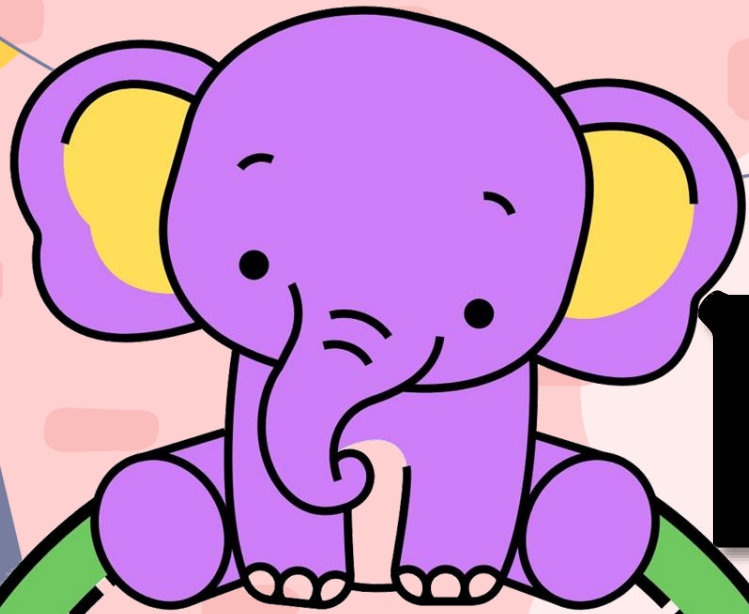
Activate Windows
Go to Settings to activate Windows.

Great!



Home

Next



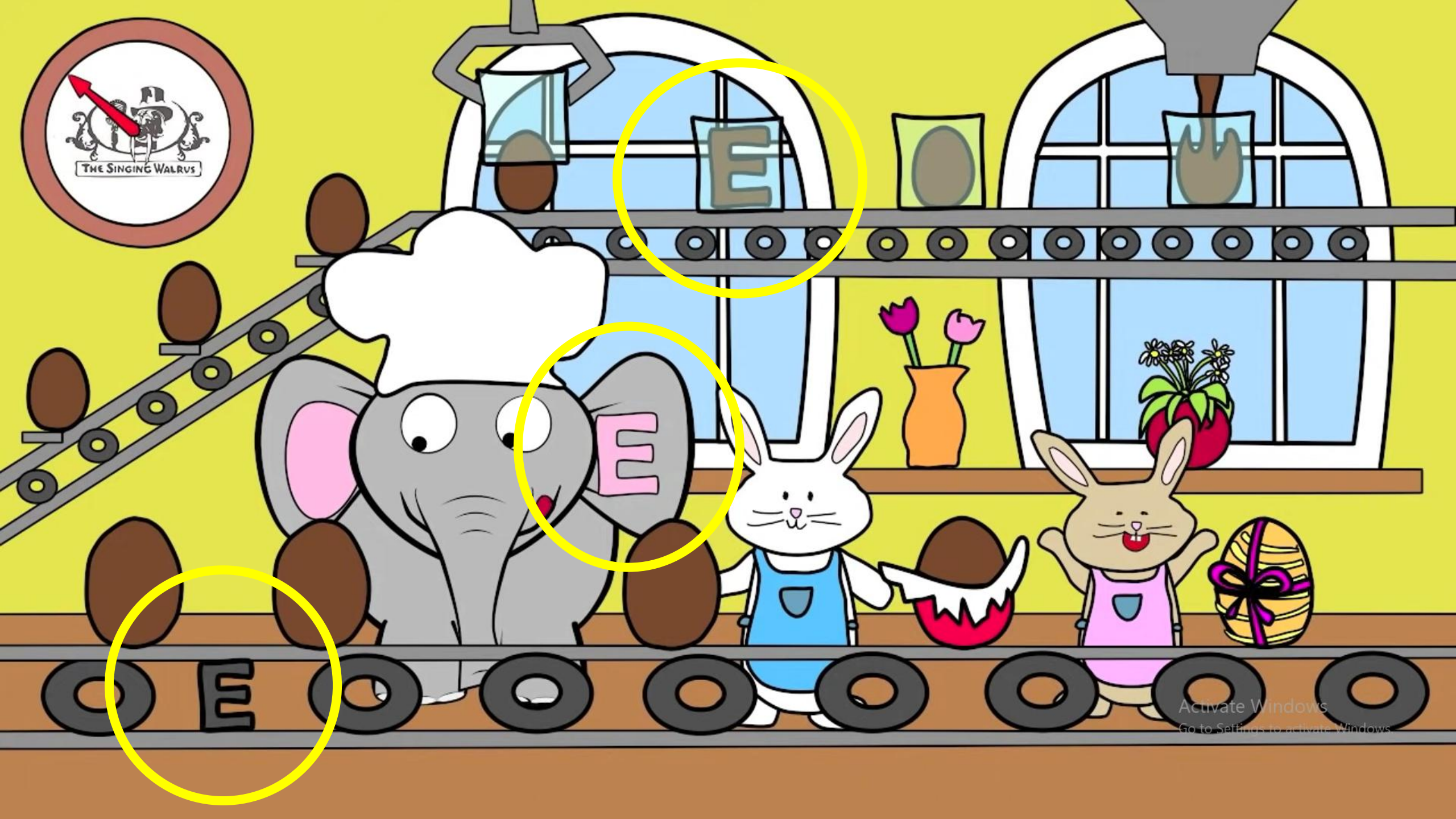
Elephant

Ee

A festive background with a light pink and red color palette. It features scattered confetti, a string of colorful bunting (yellow, pink, blue, teal) at the top, and stylized blue buildings with white windows on the sides. A large white cloud-like shape is in the center.

Find the letter

Ee



Activate Windows
Go to Settings to activate Windows

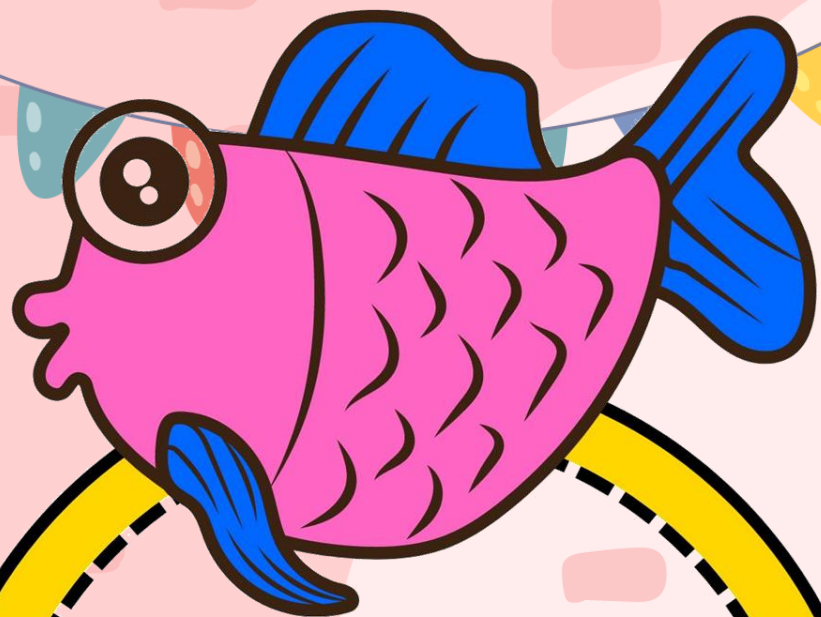


Perfect!



Home

Next



Ff

Fish



The background is a light pink color with scattered, faint, light-colored rectangular shapes resembling confetti. A string of colorful bunting (yellow, pink, blue, teal) hangs across the top. On the left and right sides, there are stylized, dark blue buildings with white window cutouts. A large, white, cloud-like shape is centered in the background, containing the text.

Find the letter

Ff





Activate Windows
Go to Settings to activate Windows

Excellent!



Home

Next



Goat

Gg

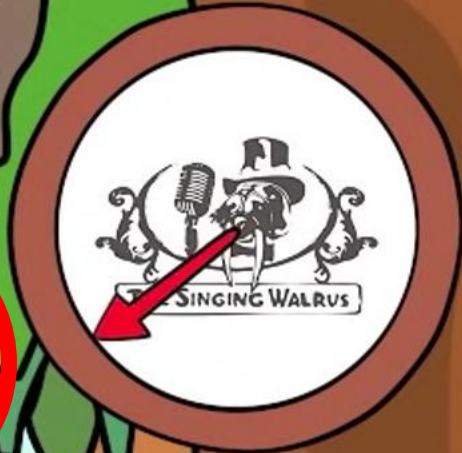
The background is a light pink color with scattered, faint, light-colored rectangular shapes resembling confetti. A string of colorful bunting (yellow, pink, blue, teal) hangs across the top. On the left and right sides, there are stylized, dark blue buildings with white window cutouts. A white, cloud-like shape is centered in the background, containing the text.

Find the letter

Gg



Activate Windows
Go to Settings to activate Windows.



Activate Windows
Go to Settings to activate Windows.

Excellent!



Home

Next



Horse

Hh



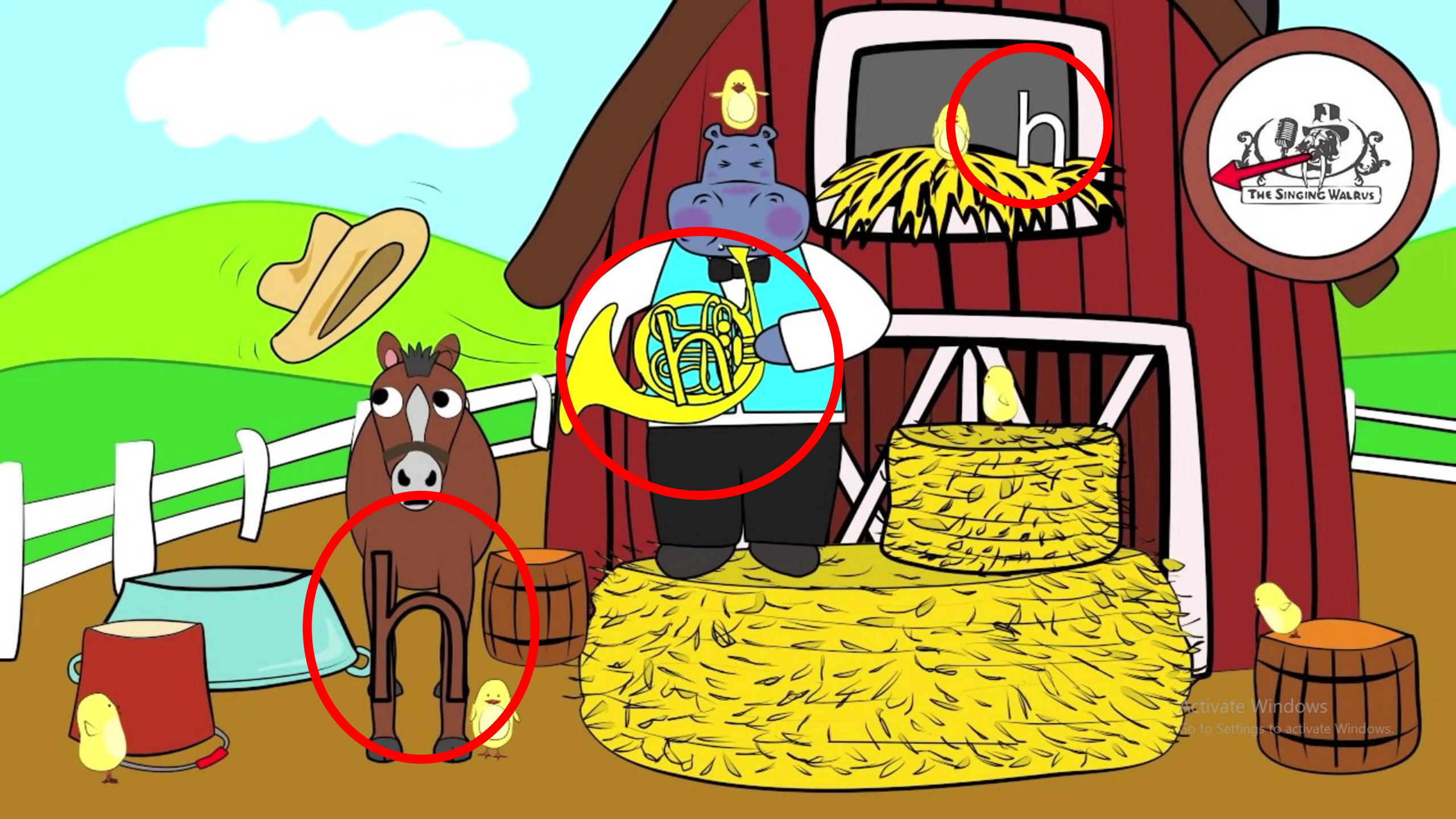
Find the letter

Hh



THE SINGING WALRUS

Activate Windows
Go to Settings to activate Windows.



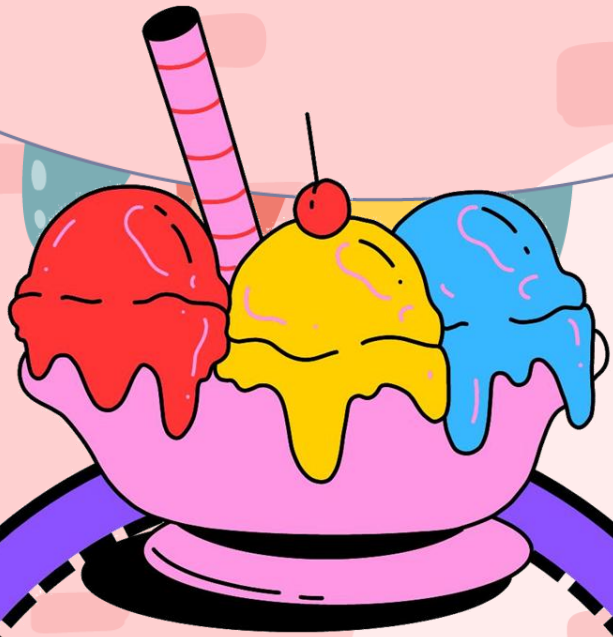
Activate Windows
Go to Settings to activate Windows.

Excellent!



Home

Next



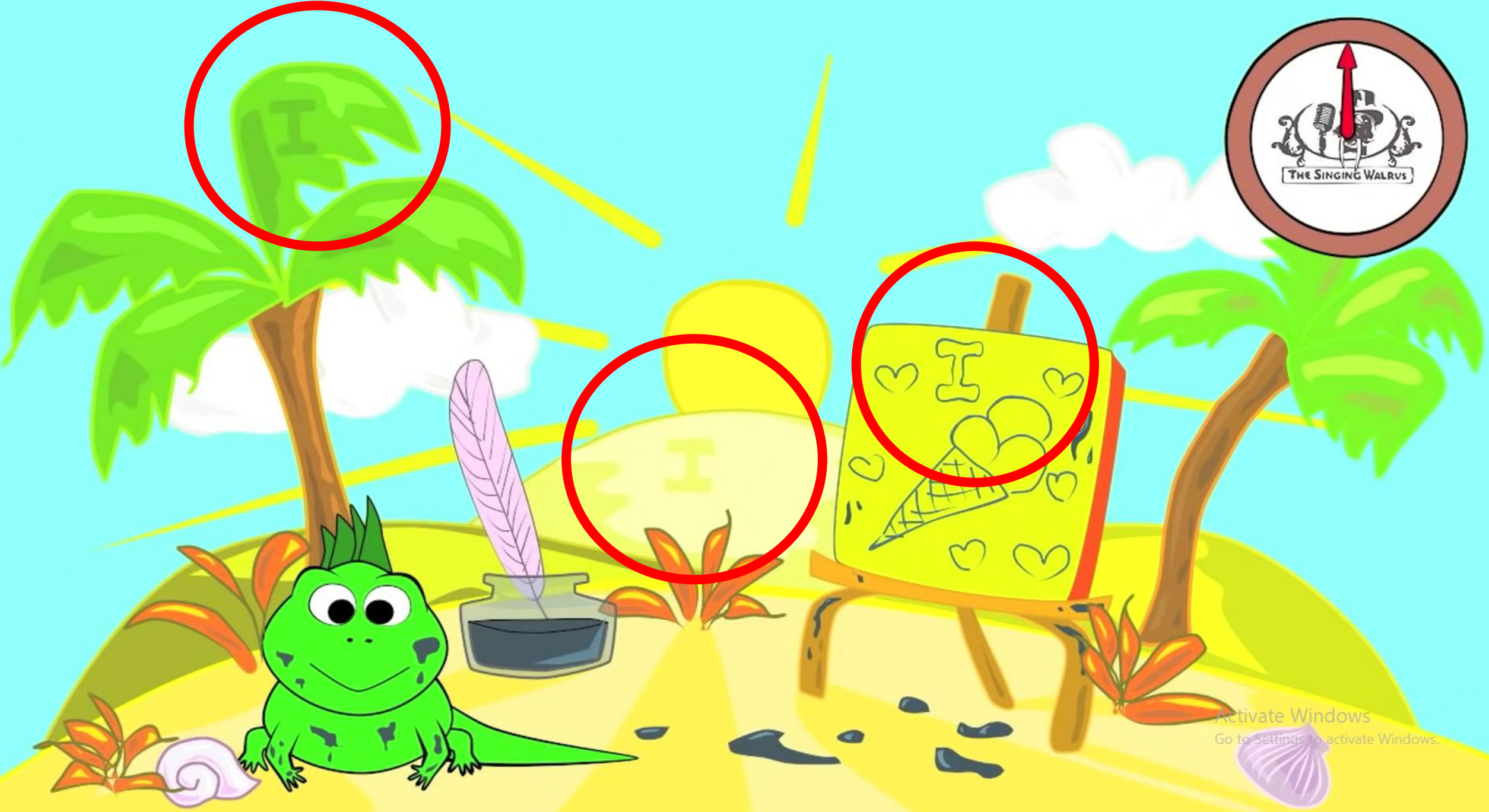
Ice cream

Ii

The background is a light pink color with scattered, faint, light-colored rectangular shapes. A string of colorful triangular bunting (yellow, pink, blue, teal) hangs across the top. On the left and right sides, there are stylized, dark blue houses with white window cutouts. A white, cloud-like shape is centered in the background, containing the text.

Find the letter

li



Activate Windows
Go to Settings to activate Windows.



Activate Windows
Go to Settings to activate Windows.

Excellent!



Home

[Next](#)



Jelly

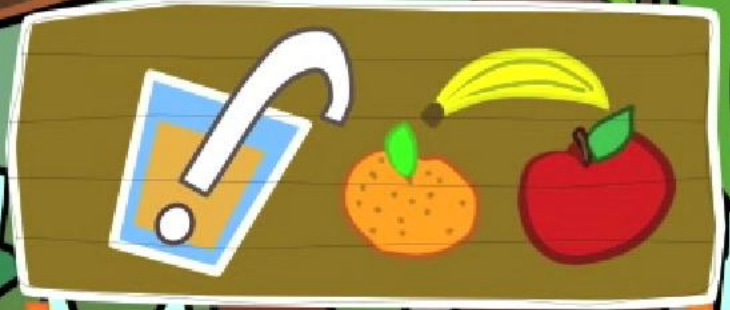
A festive background with a light pink and red color palette. It features scattered confetti, a string of colorful bunting (yellow, pink, blue, teal) across the top, and stylized blue buildings with white windows on the sides. A large white cloud-like shape is in the center.

Find the letter

jz



Activate Windows
Go to Settings to activate Windows



Activate Windows
Go to Settings to activate Windows

Excellent!



Home

Next



Kite

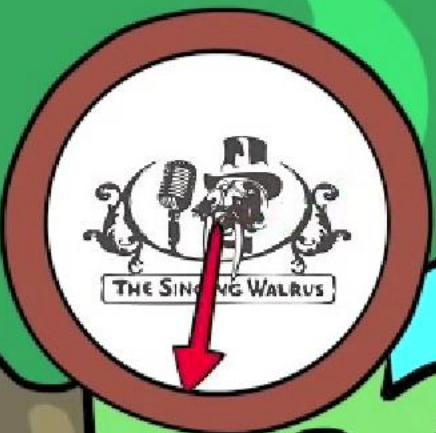
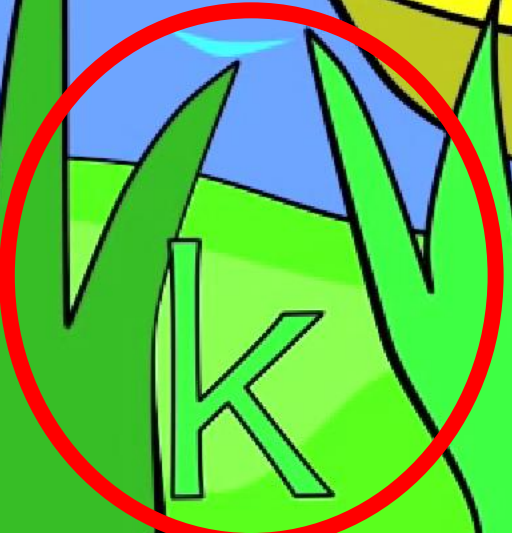
The background is a light pink color with scattered, faint, light-colored rectangular shapes resembling confetti. A string of colorful bunting (yellow, pink, blue, teal) hangs across the top. On the left and right sides, there are stylized, dark blue buildings with white window cutouts. A white, cloud-like shape is centered in the background, containing the text.

Find the letter

Kk



Activate Windows
Go to Settings to activate Windows



Activate Windows
Go to Settings to activate Windows

Excellent!



Home

Next



Lion

The background is a light pink color with scattered, faint, darker pink rectangular shapes. A string of colorful triangular bunting (yellow, red, blue, teal) hangs across the top. On the left and right sides, there are stylized blue buildings with white window cutouts. A large, white, cloud-like shape is centered in the background.

Find the letter

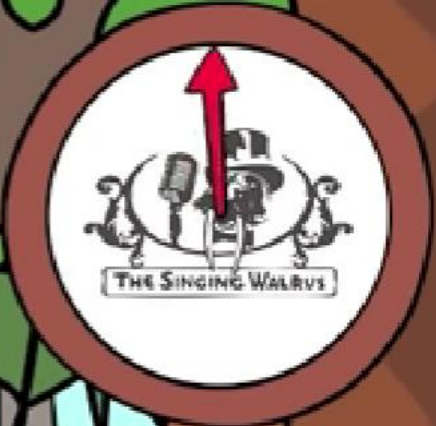
ll



Activate Windows
Go to Settings to activate Windows.



LEMONADE



Activate Windows
Go to Settings to activate Windows.

Excellent!



Home

Next



Monkey

The background is a light pink color with scattered, faint, light-colored rectangular shapes resembling confetti. A string of colorful bunting (yellow, pink, blue, teal) hangs across the top. On the left and right sides, there are stylized, dark blue buildings with white window cutouts. The main text is centered within a large, white, cloud-like shape.

Find the letter

Mm



Activate Windows
Go to Settings to activate Windows.



m

m

ma



Activate Windows
Go to Settings to activate Windows.

Excellent!



Home

Next



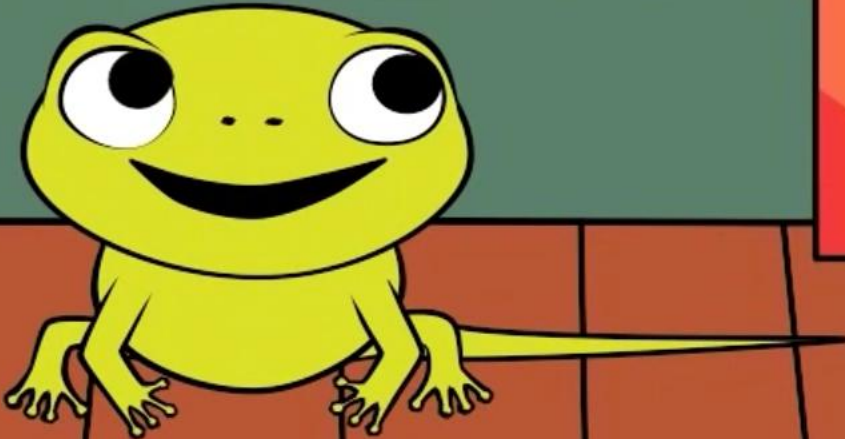
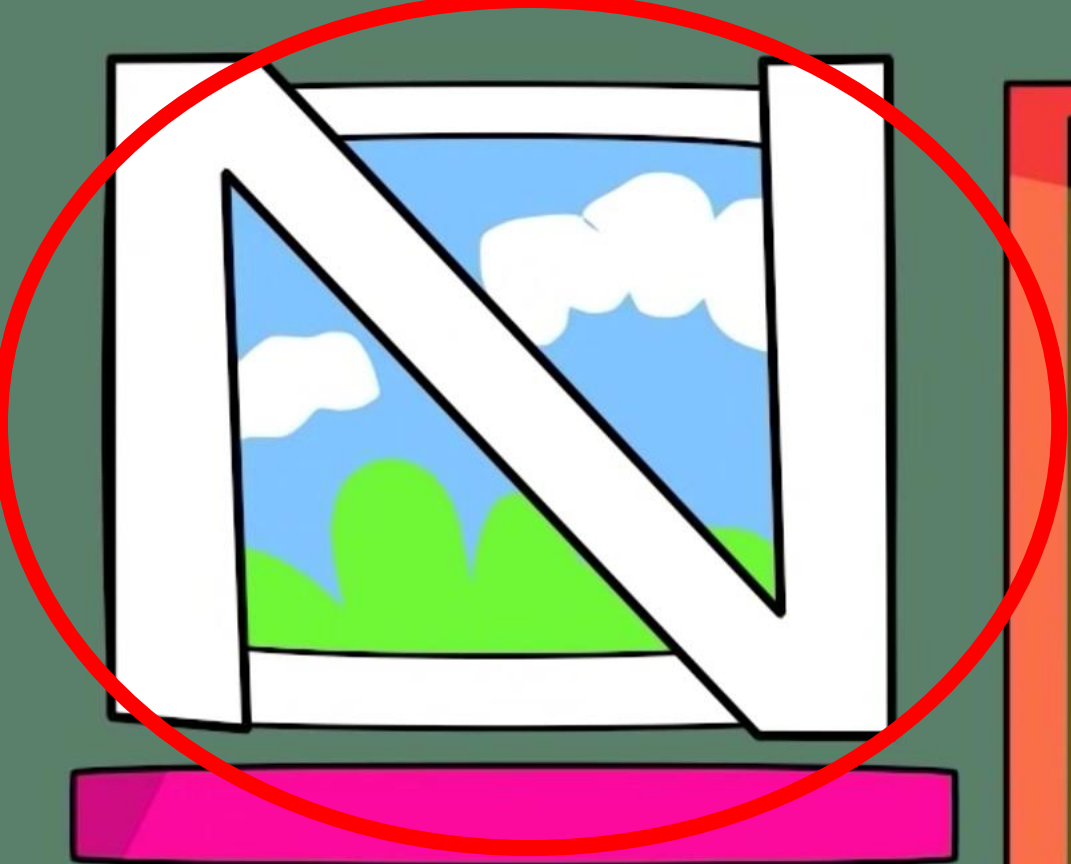
Nest

Nn

The background is a light pink color with scattered, faint, light-colored rectangular shapes resembling confetti. A string of colorful bunting (yellow, pink, blue, teal) hangs across the top. On the left and right sides, there are stylized, dark blue buildings with white window cutouts. The main text is centered within a large, white, cloud-like shape.

Find the letter

Nn



Activate Windows
Go to Settings to activate Windows.



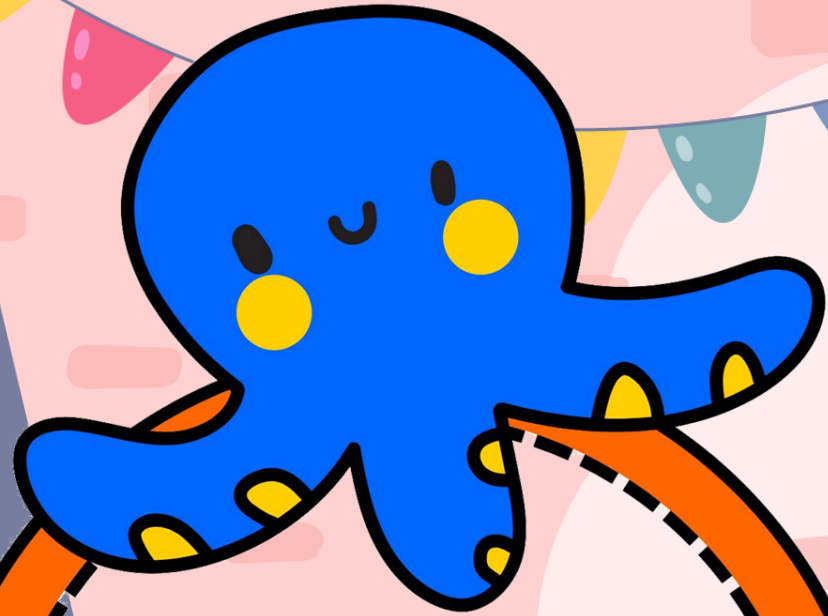
Activate Windows
Go to Settings to activate Windows.

Excellent!



Home

Next



Octopus

Oo

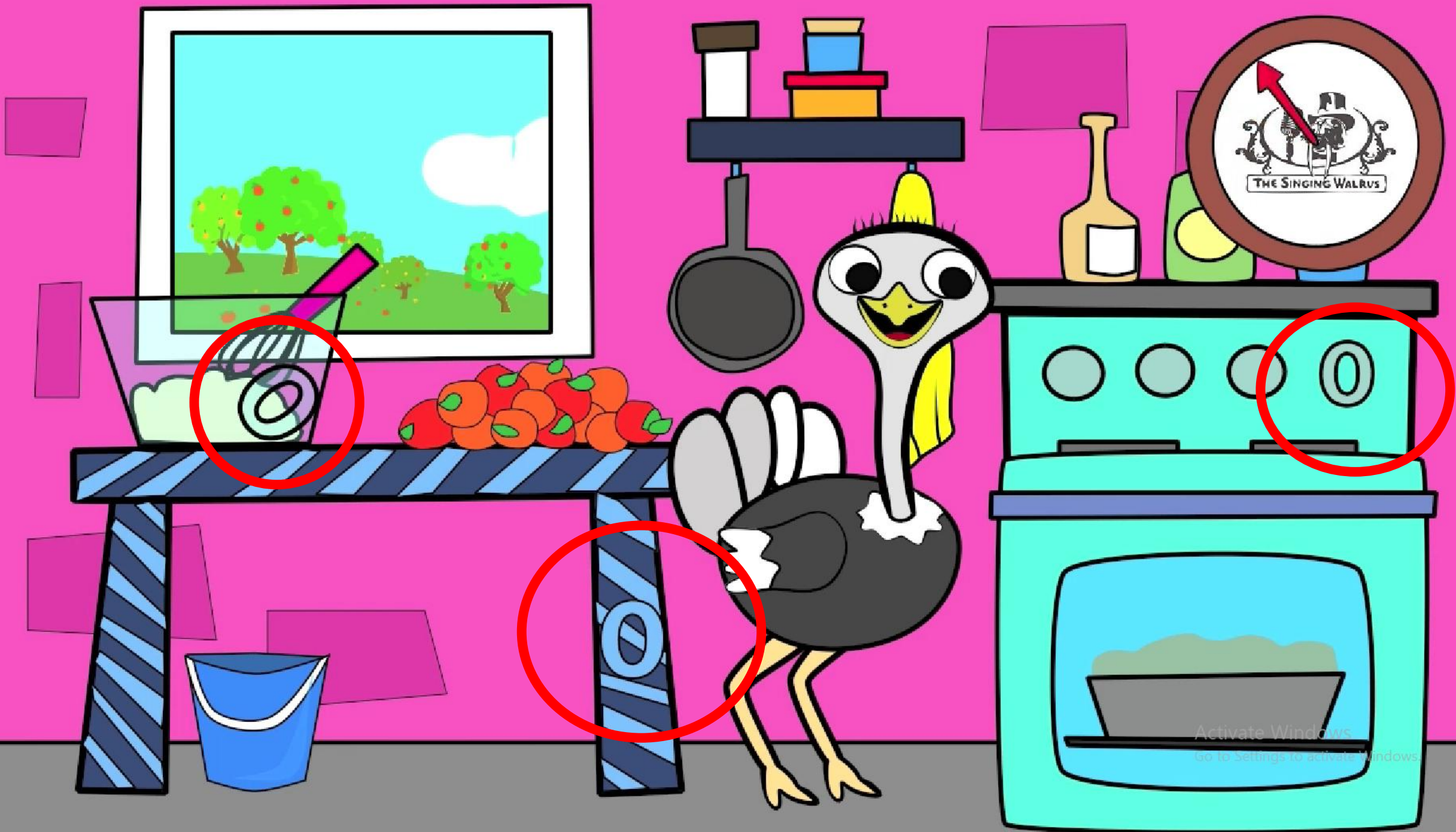
The background is a light pink color with scattered, faint, light-colored rectangular shapes resembling confetti. A string of colorful bunting (yellow, pink, blue, teal) hangs across the top. On the left and right sides, there are stylized, dark blue buildings with white window cutouts. A white, cloud-like shape is centered in the background, containing the text.

Find the letter

Oo



Activate Windows
Go to Settings to activate Windows.



Activate Windows
Go to Settings to activate Windows

Excellent!



Home

Next

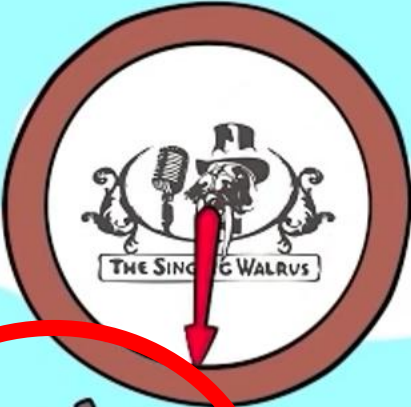


Pig

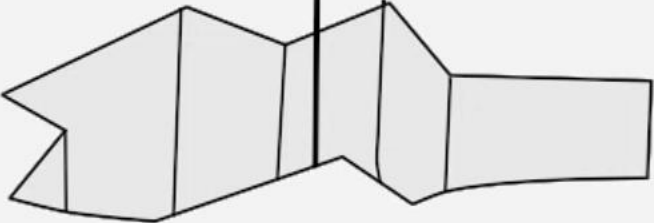
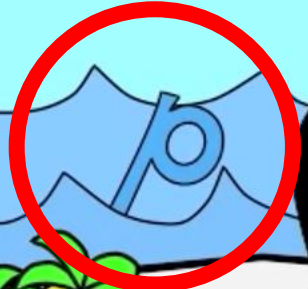
The background is a light pink color with scattered light pink rectangular confetti. A string of colorful bunting (yellow, pink, blue, teal) hangs across the top. On the left and right sides, there are stylized blue buildings with dark blue windows. A white arched window is visible on the right building.

Find the letter

Pp



Activate Windows
Go to Settings to activate Windows.



Activate Windows
Go to Settings to activate Windows.

Fantastic!



Home

Next



Queen

Qq

The background is a light pink color with scattered, faint, light-colored rectangular shapes resembling confetti. A string of colorful bunting (yellow, pink, blue, teal) hangs across the top. On the left and right sides, there are stylized, dark blue triangular shapes representing trees or buildings. In the bottom right corner, there is a small white window with a dark blue frame and a white crossbar.

Find the letter

Qq



Activate Windows
Go to Settings to activate Windows.




Activate Windows
Go to Settings to activate Windows.

Fantastic!



Home

Next



Rabbit



Rr

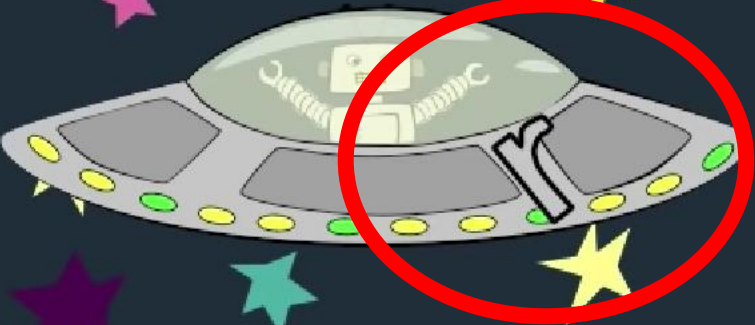
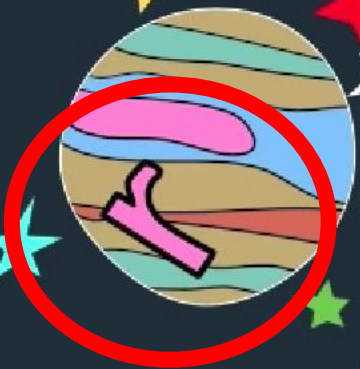
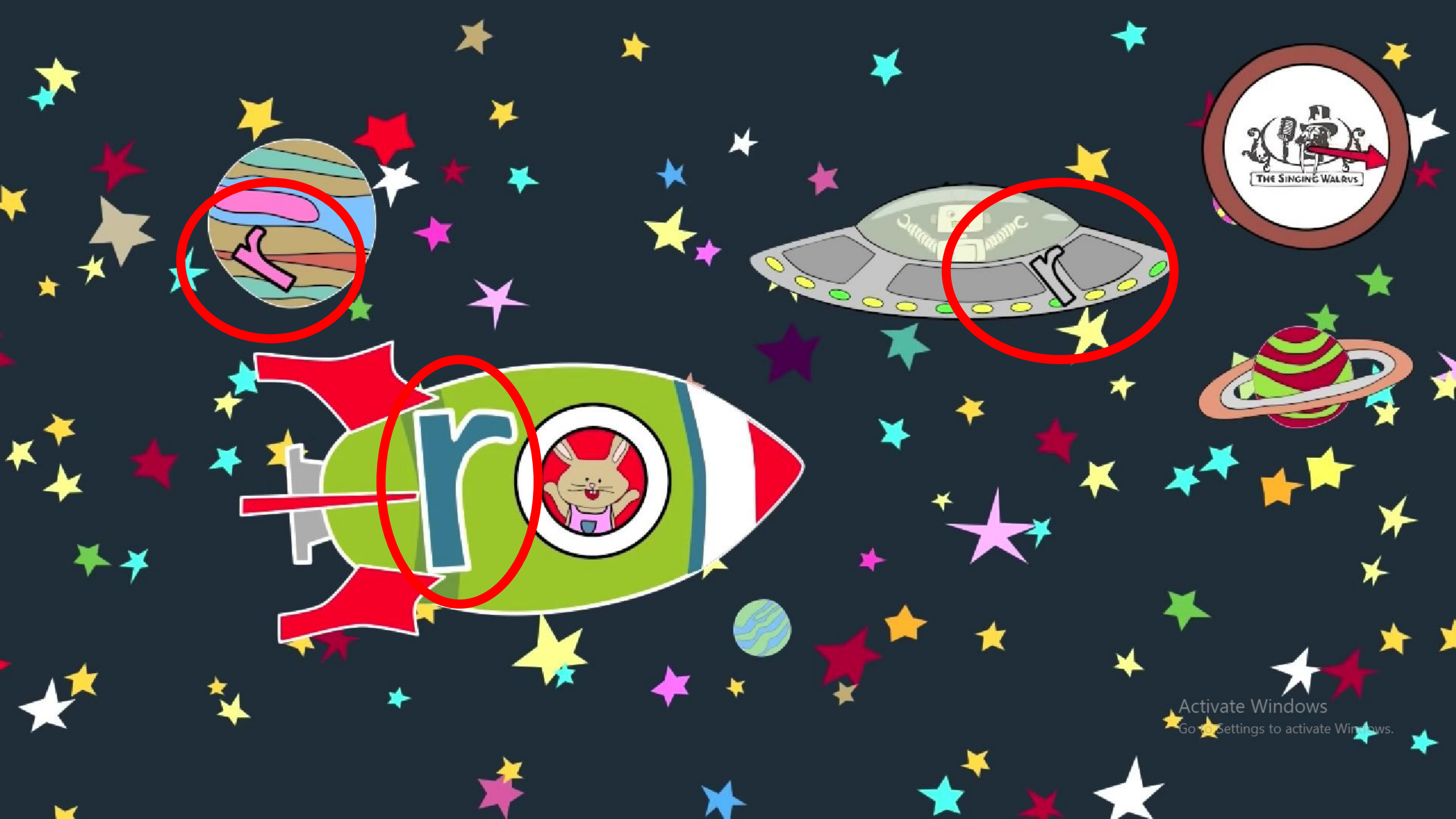
The background is a light pink color with scattered confetti. A string of colorful bunting (yellow, pink, blue, teal) hangs across the top. On the left and right sides, there are stylized blue buildings with white windows. A large white cloud-like shape is in the center, containing the text.

Find the letter

Rr



Activate Windows
Go to Settings to activate Windows.



Activate Windows
Go to Settings to activate Windows.

Fantastic!



Home

Next

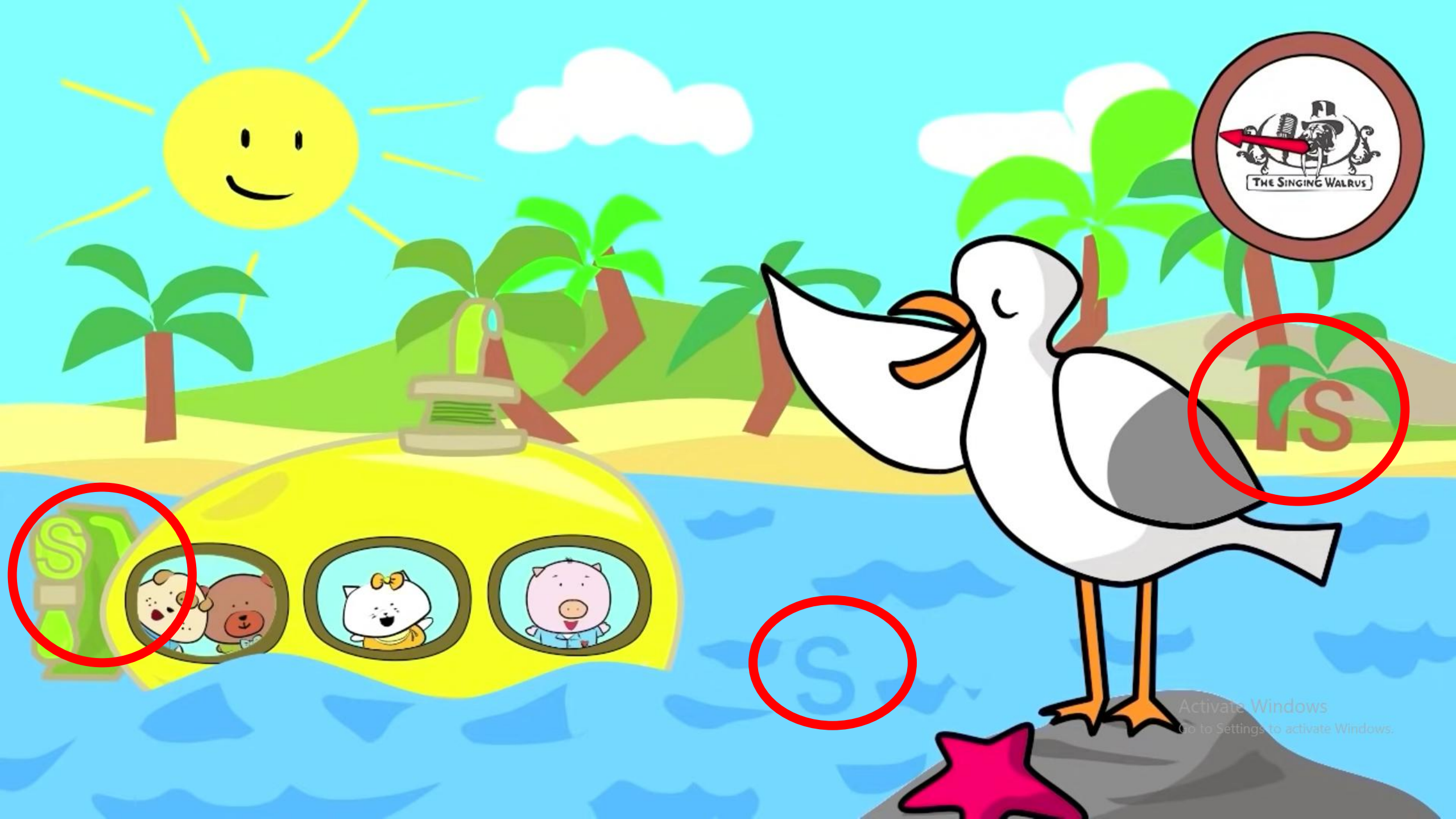


Sun

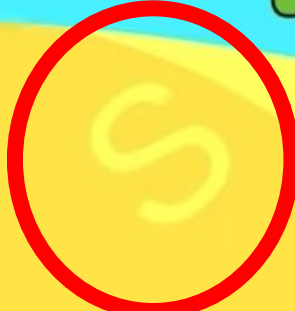
A festive background with a light pink and red color palette. It features scattered confetti, a string of colorful bunting (yellow, pink, blue, teal) at the top, and stylized blue buildings with white windows on the sides. A large white cloud-like shape is in the center.

Find the letter

Ss



Activate Windows
Go to Settings to activate Windows.



Activate Windows
Go to Settings to activate Windows.



Fantastic!



Home

Next



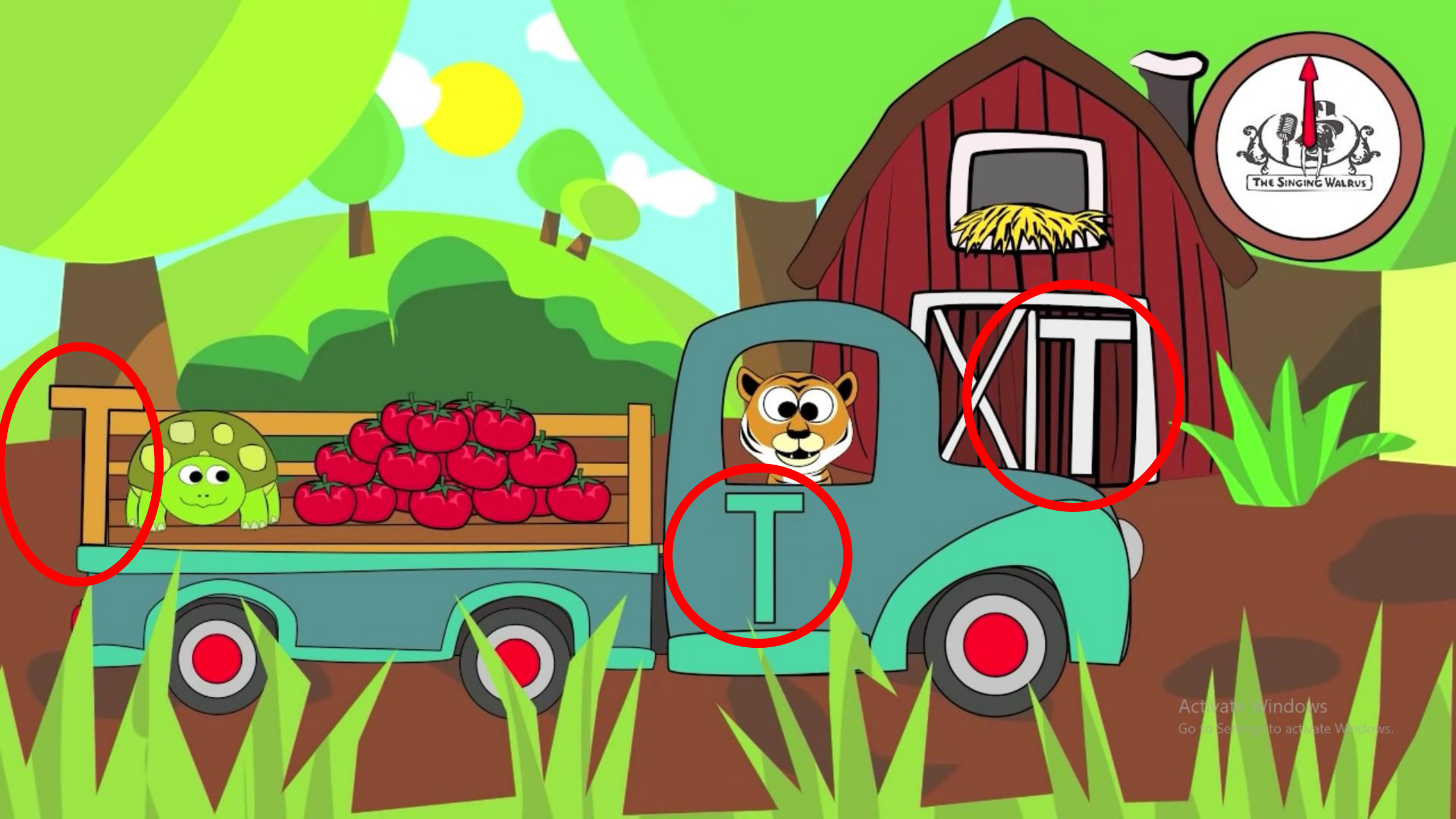
Tiger

Tt

The background is a light pink color with scattered, faint, light-colored rectangular shapes resembling confetti. A string of colorful bunting (yellow, pink, blue, teal) hangs across the top. On the left and right sides, there are stylized, dark blue buildings with white window cutouts. A large, white, cloud-like shape is centered in the background, containing the text.

Find the letter

Tt



Activate Windows
Go to Settings to activate Windows.



Activate Windows
Go to Settings to activate Windows.




Fantastic!



Home

Next



Umbrella

Uu

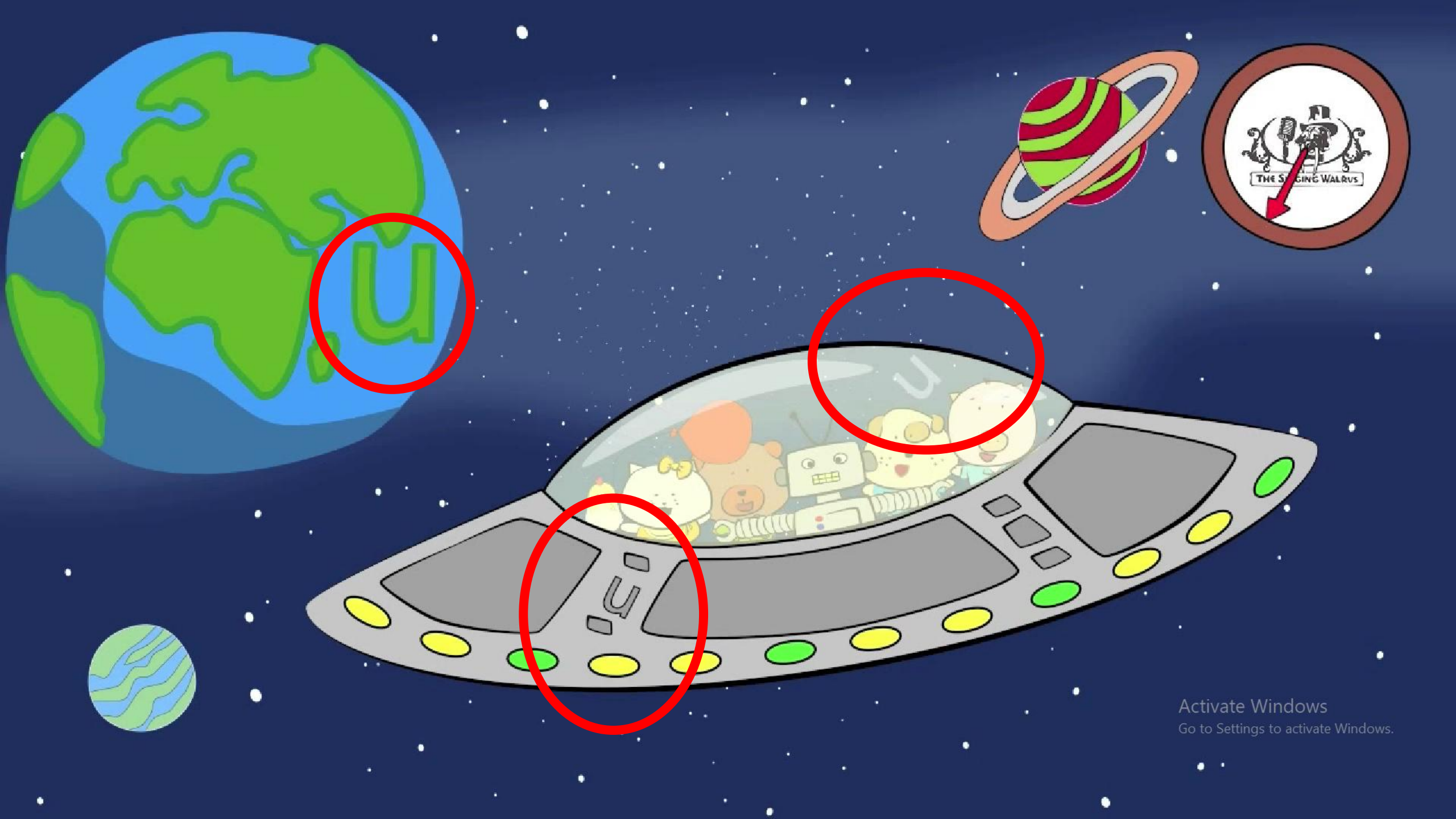
A festive background with a light pink and red color palette. It features scattered confetti, a string of colorful bunting (yellow, pink, blue, teal) across the top, and stylized blue buildings with white windows on the sides. The main text is centered on a white, cloud-like shape.

Find the letter

Uu



Activate Windows
Go to Settings to activate Windows



Activate Windows
Go to Settings to activate Windows.

Fantastic!



Home

Next

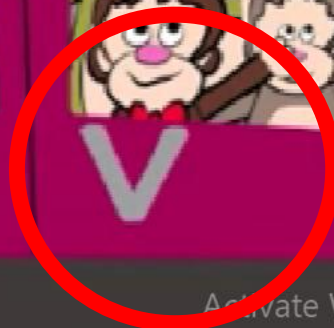


van

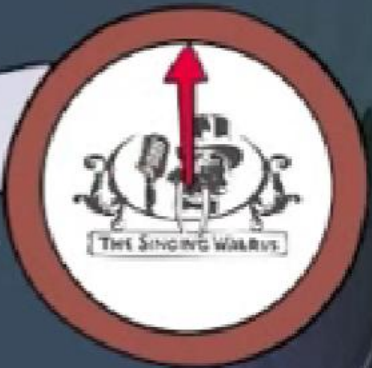


Find the letter

v v



Activate Windows
Go to Settings to activate Windows.



Activate Windows
Go to Settings to activate Windows.

Fantastic!



Home

Next

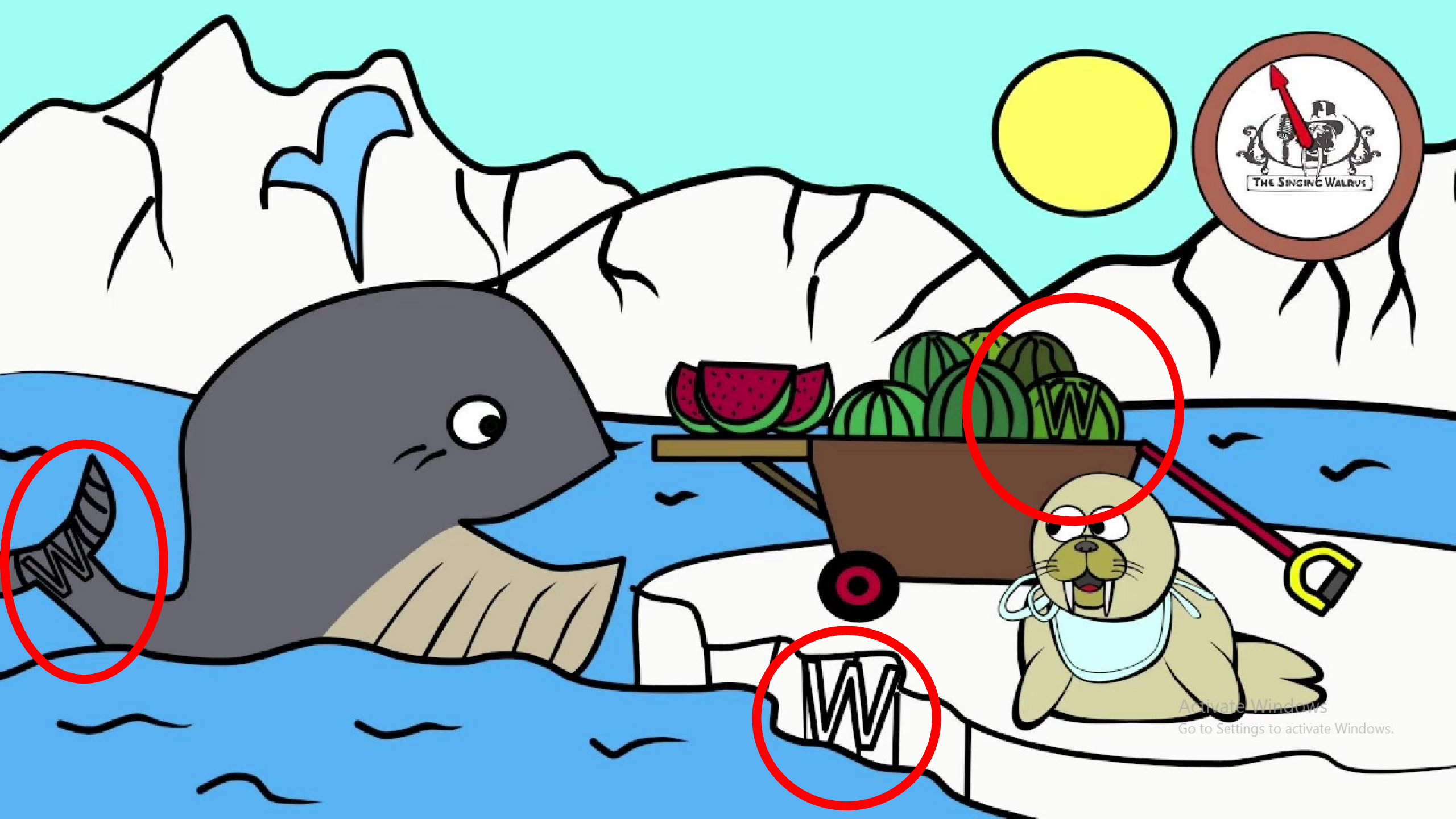


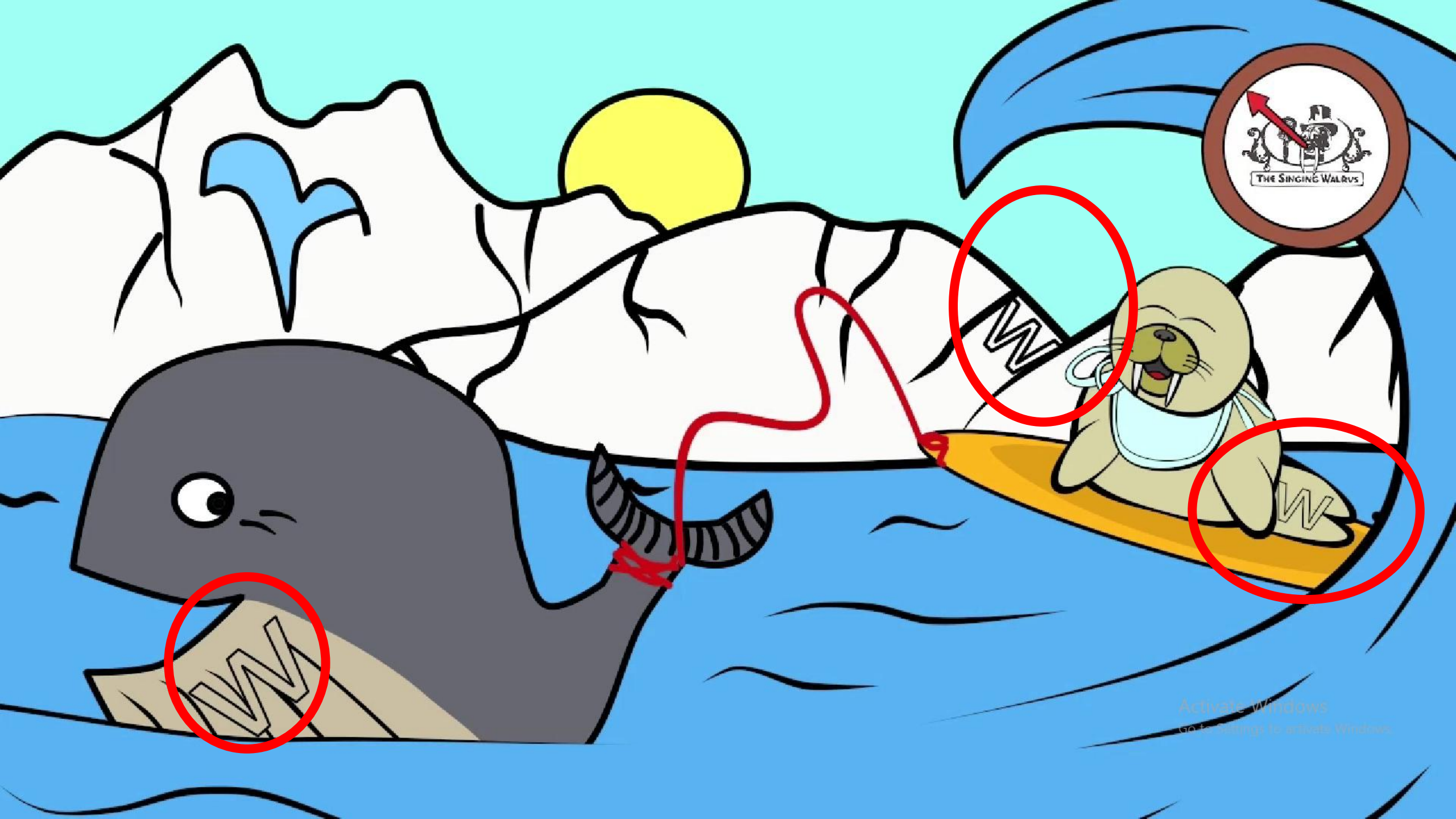
whale



Find the letter

Ww





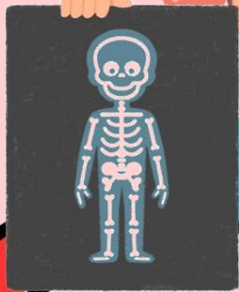
Activate Windows
Go to Settings to activate Windows

Fantastic!



Home

Next



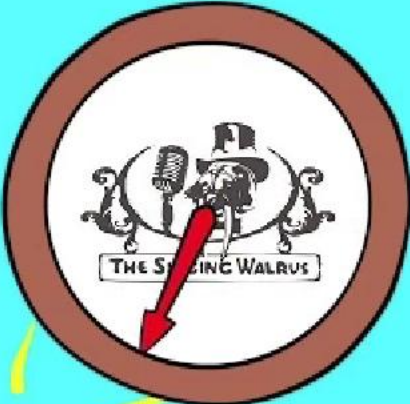
x-ray

xx

The background is a light pink color with scattered light pink rectangular confetti. A string of colorful bunting (yellow, pink, blue, teal) hangs across the top. On the left and right sides, there are stylized blue buildings with dark blue windows. A white arched window is visible on the bottom right building.

Find the letter

Xx



Activate Windows
Go to Settings to activate Windows.



Activate Windows
Go to Settings to activate Windows.

Fantastic!



Home

Next

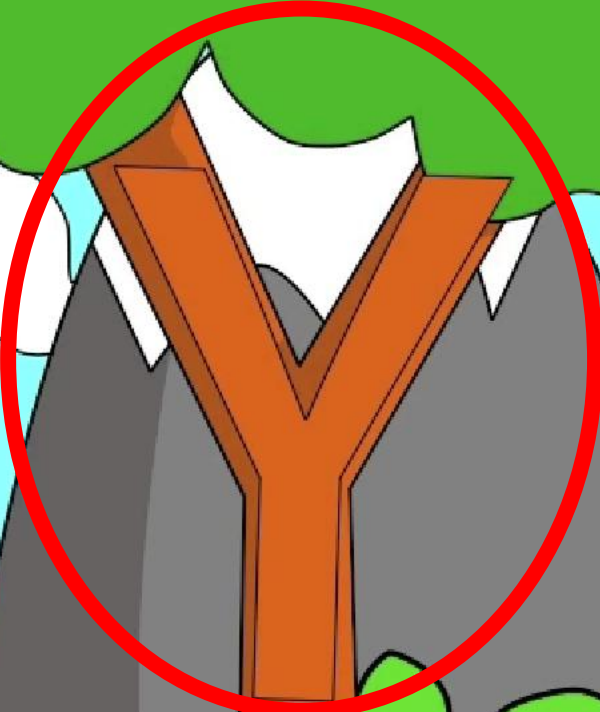


Yoyo

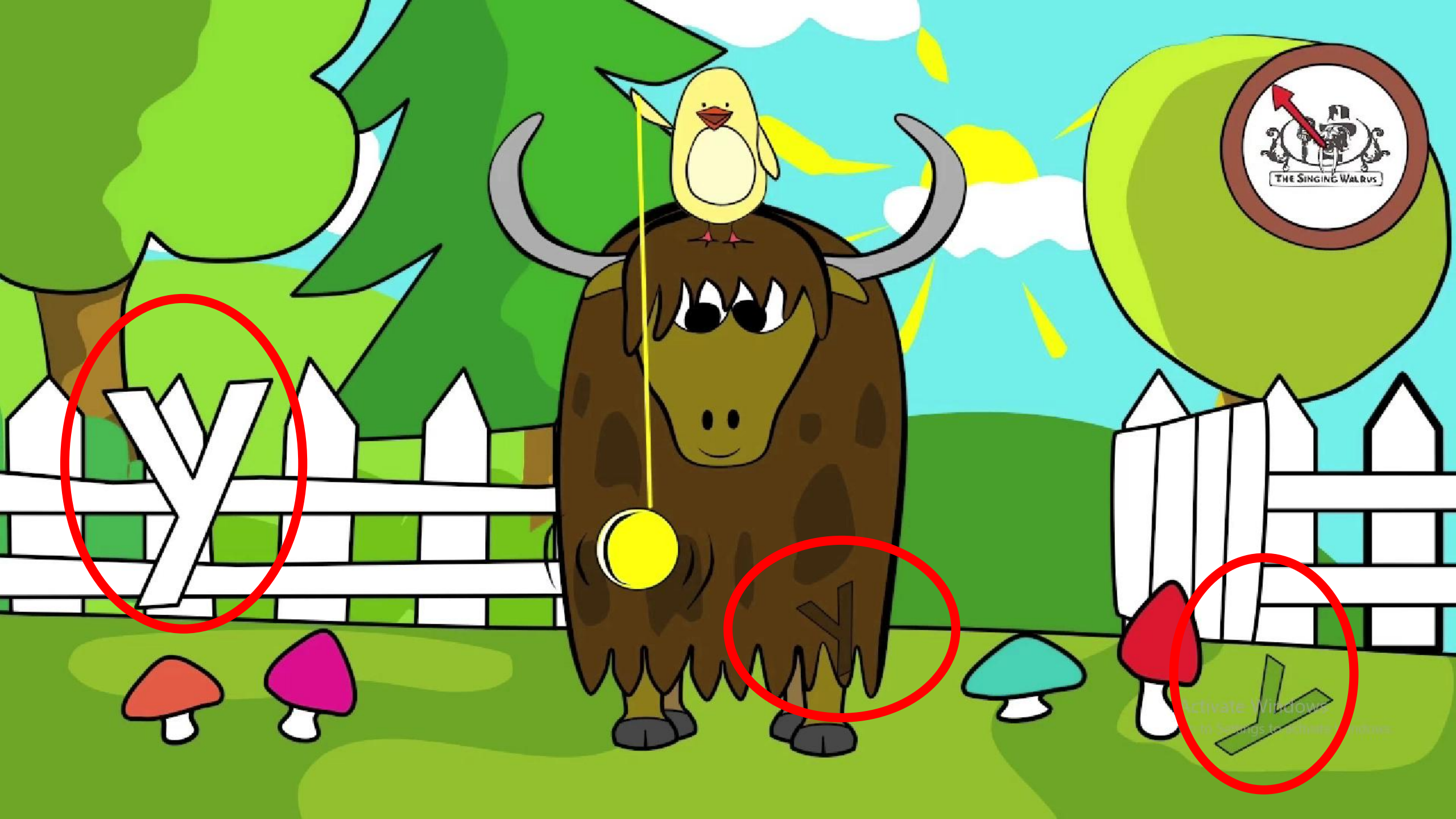


Find the letter

Yy



Activate Windows
Go to Settings to activate Windows.



Fantastic!



Home

Next



Zebra

The background is a light pink color with scattered, faint, light-colored rectangular shapes resembling confetti. A string of colorful bunting (yellow, pink, blue, teal) hangs across the top. On the left and right sides, there are stylized, dark blue buildings with white window cutouts. A large, white, cloud-like shape is centered in the background, containing the text.

Find the letter

Zz



Activate Windows
Go to settings to activate Windows



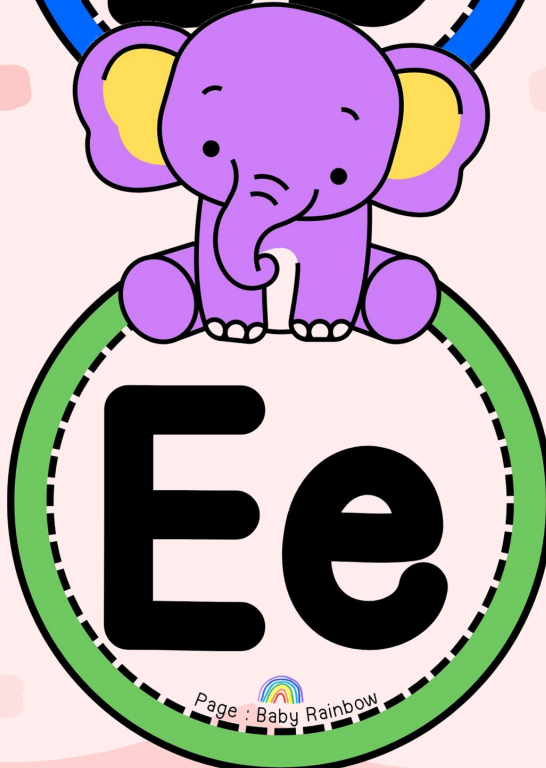
Activate Windows
Go to Settings to activate Windows.

Excellent!



Home

Next







Mm

Page : Baby Rainbow



Nn

Page : Baby Rainbow



Oo

Page : Baby Rainbow



Pp

Page : Baby Rainbow



Qq

Page : Baby Rainbow



Rr

Page : Baby Rainbow



Ss

Page : Baby Rainbow



Tt

Page : Baby Rainbow



Uu

Page : Baby Rainbow




Vv

Page : Baby Rainbow



Ww

Page : Baby Rainbow



Xx

Page : Baby Rainbow



Yy

Page : Baby Rainbow



Zz

Page : Baby Rainbow